

An aerial photograph of a river basin in the American West. The river winds through a landscape of rolling green hills and dense forests. A vibrant rainbow arches across the sky above the water. The title text is overlaid in white on the upper portion of the image.

# Partner Engagement Across Eco-Hydrologic Projects in the American West: A Case Study in the Tongue River Basin of Montana and Wyoming

Megan Moore, Ph.D.

ORISE Fellow USGS NC/NW CASC

Co-Authors: Theodore Barnhart, Shanny Spang Gion,  
Jason Whiteman, Todd Blythe, Nick Taylor, and Jay Alder



Actionable science

Decision support tools

Stakeholder engagement



# Roadmap

---

Actionable Science

---

Decision Support Tools

---

Stakeholder Engagement

---

Project Introductions

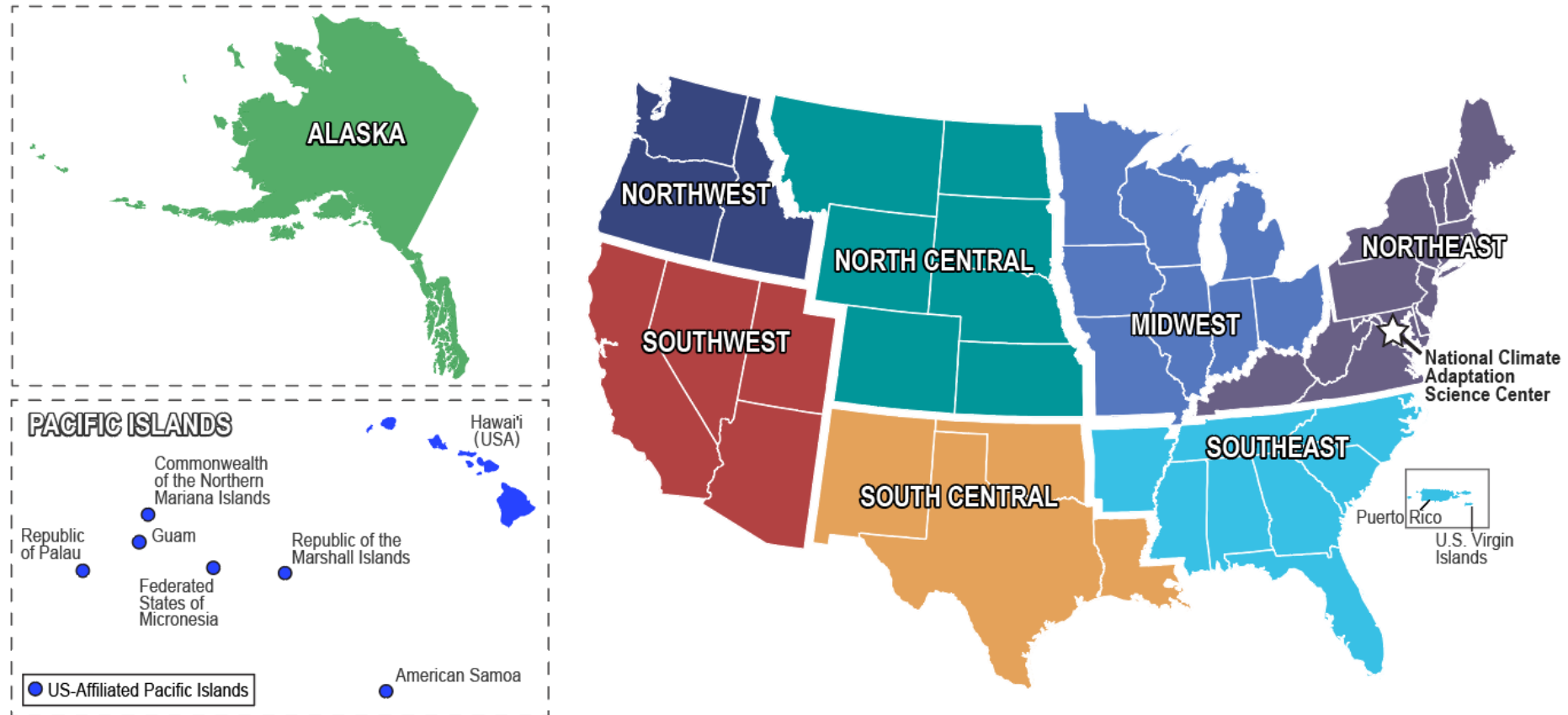
---

Tongue River Project Engagement

---

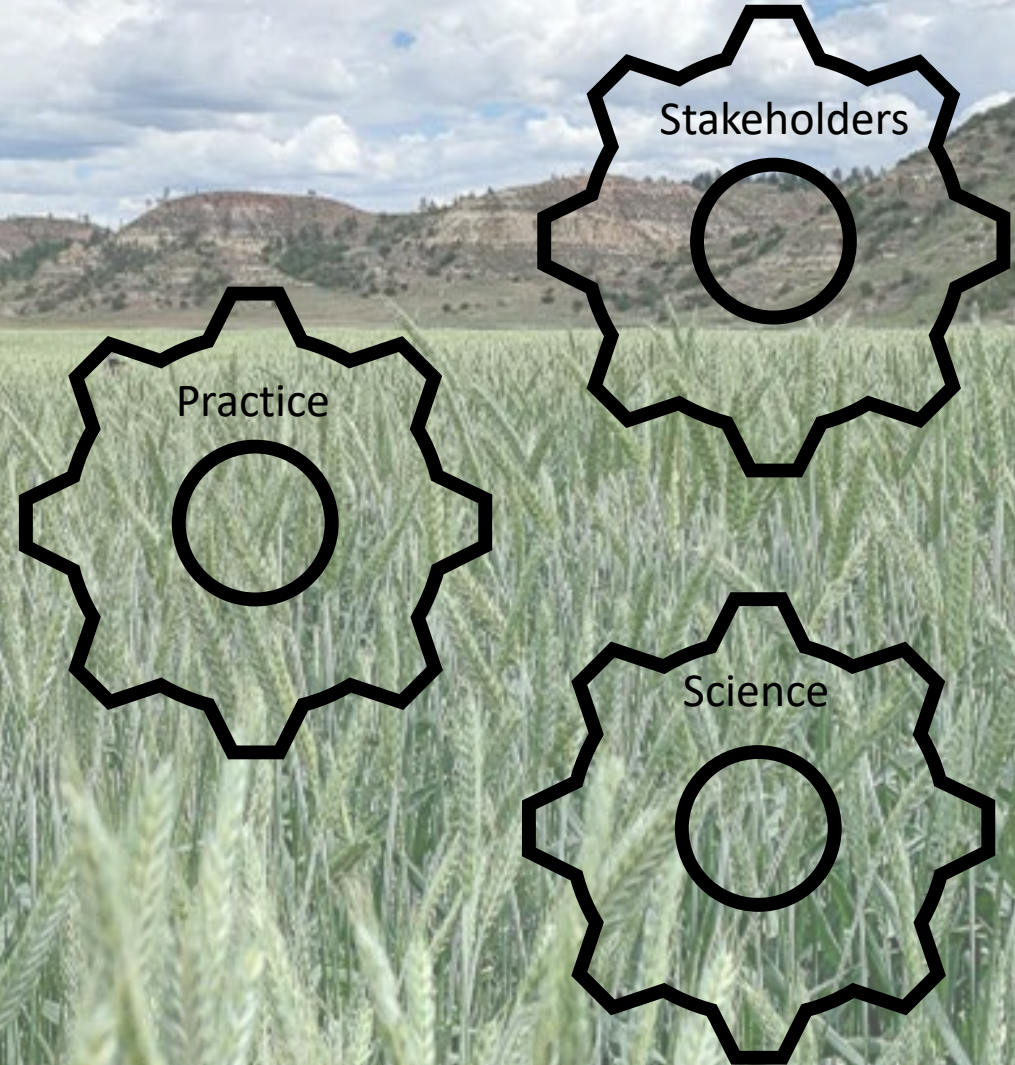
Takeaways

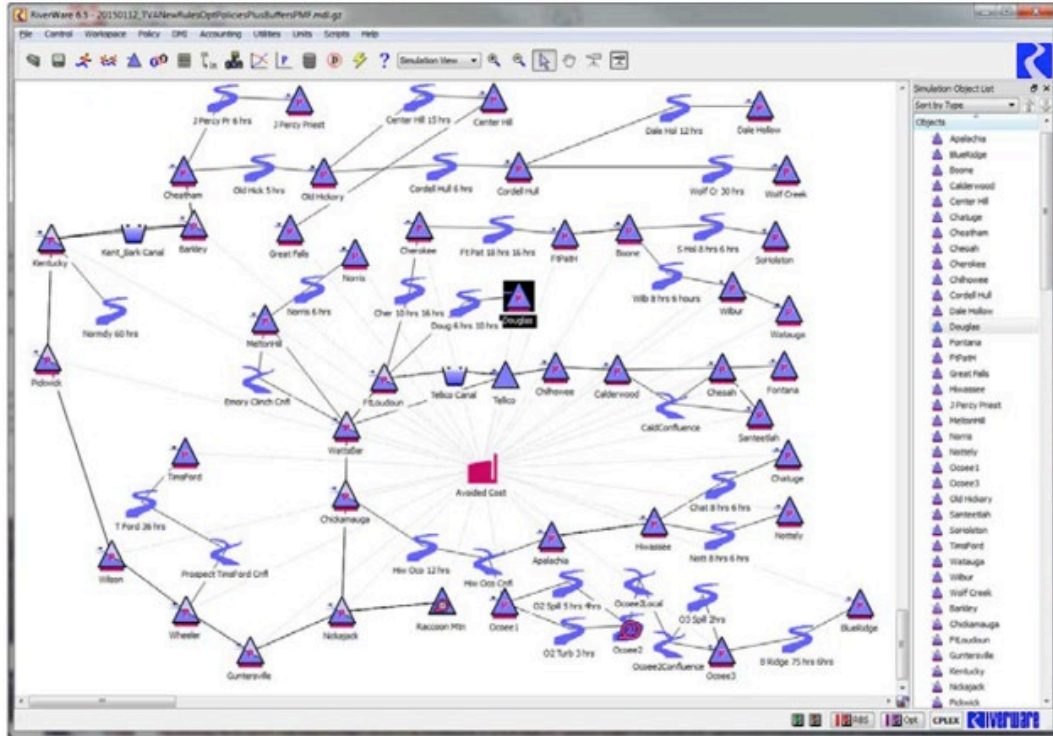
# Climate Adaptation Science Centers (CASCs)



# Actionable Science

Useful, usable, used





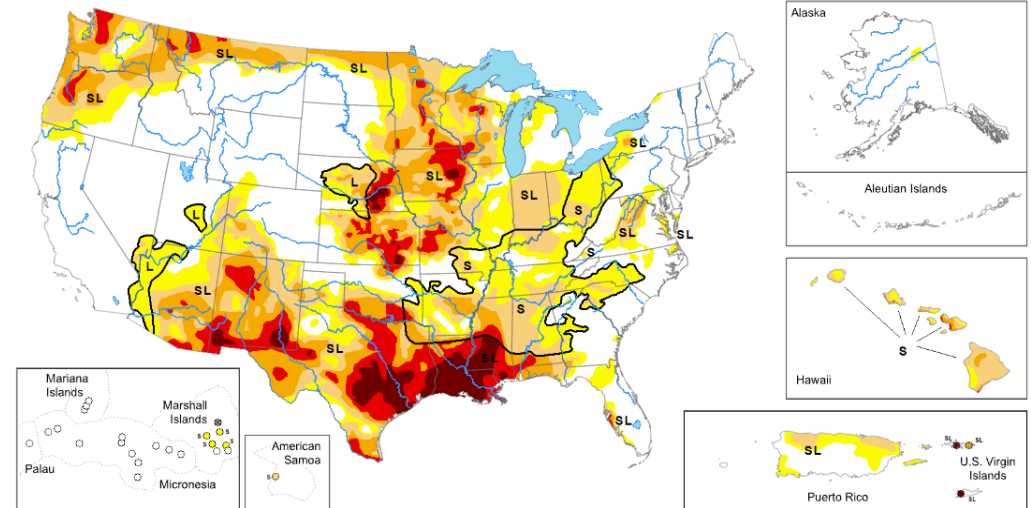
## U.S. Drought Monitor

[Current](#)
[Maps](#)
[Data](#)
[Summary](#)
[About](#)
[Conditions & Outlooks](#)
[Ag in Drought](#)
[En Español](#)
[NADM](#)

Map released: October 5, 2023

Data valid: October 3, 2023

View grayscale version of the map



# Decision Support Tools



01

Relevance

02

Usability

03

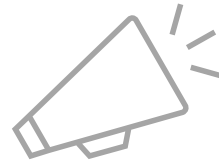
Credibility

Decision Support Tools: What Makes Them Useful?

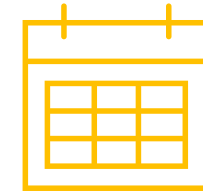
# Decision Support Tools: Why Are They Not Used?



Saliency

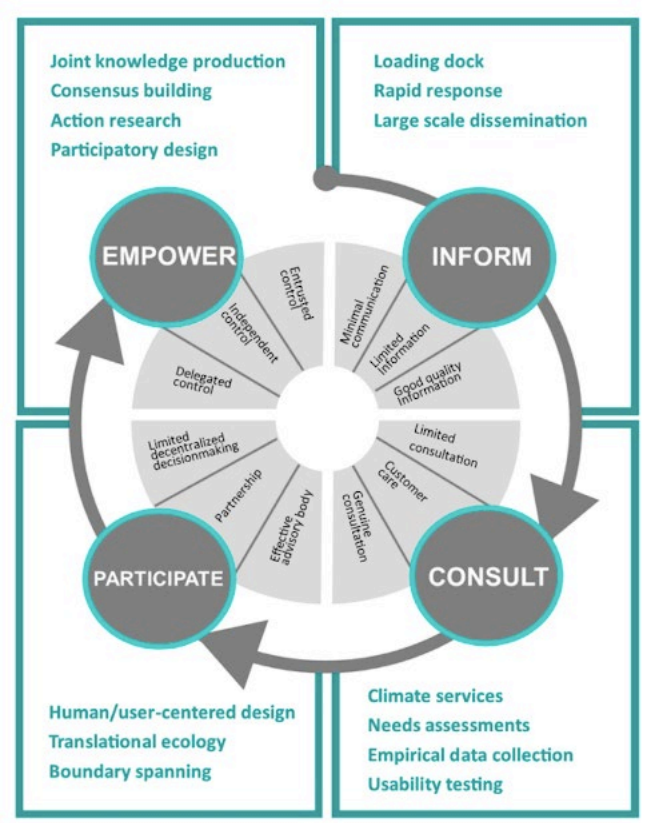
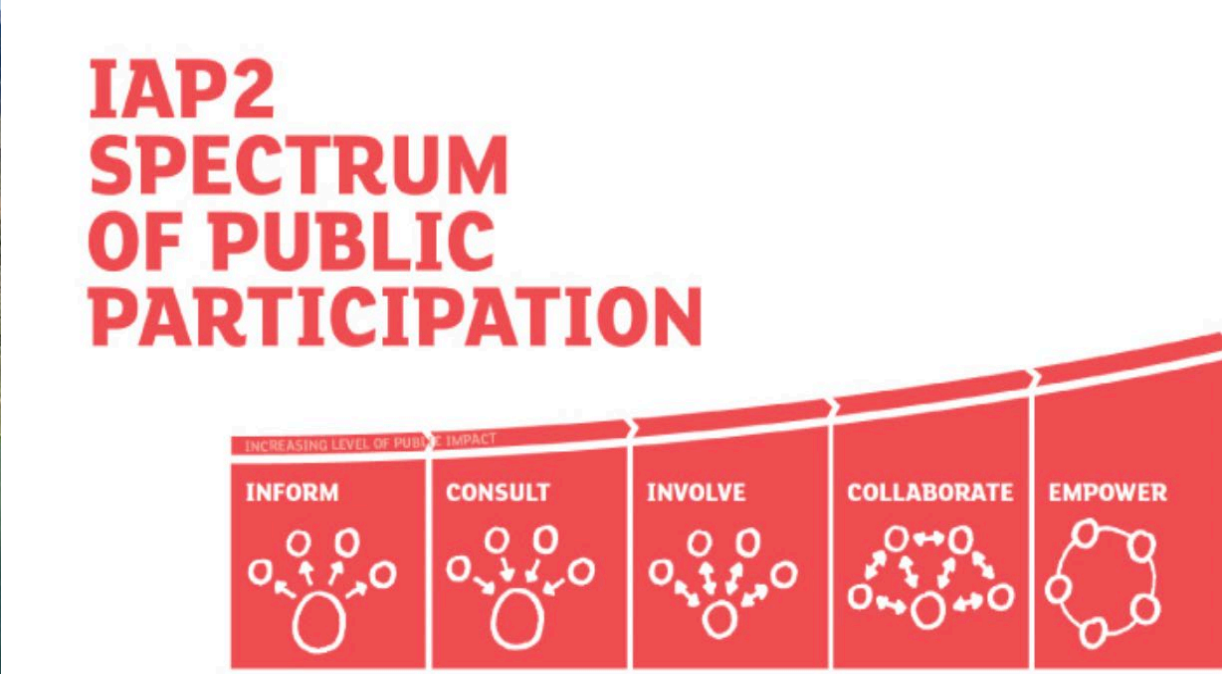


Awareness



Capacity

# Stakeholder Engagement



Bamzai-Dodson et al., 2021

# Eco-Hydrologic Projects

---

High priority science needs

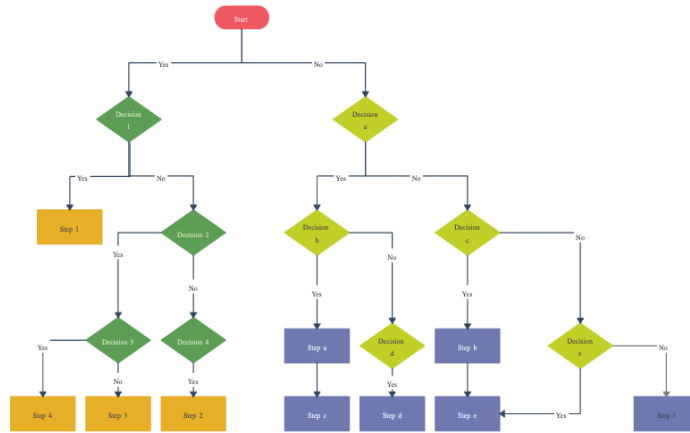
---

Coordination with partners *and* engagement with stakeholders



PC: Anhede

# Eco-Hydrologic Projects



PC: Stukel



# Engagement Across Projects

PROJECT NAME	
<b>Partner List</b>	
<b>Partner Name</b>	
Reason for engaging this partner and the partner's role in the project	
Engagement type	
Engagement frequency and method	
Potential gains for partner	
How this partner use the product or information from this project	
Potential challenges for partner	
How you will incorporate their ideas, feedback, and concerns	
<b>List any stakeholders you think are missing from this list</b>	
<b>Describe project success for the project team and partners</b>	



# Tongue River Project Engagement

Relationship  
building

Knowledge  
coproduction

Clear  
communication

Dedicated  
outreach  
trips



Tongue River Project  
Engagement Considerations

# Engagement Takeaways

Clear partner roles

Check ins

Quality > quantity






Reflexivity

# Thank you!

Contact: [mamoore@usgs.gov](mailto:mamoore@usgs.gov)



# IAP2 SPECTRUM OF PUBLIC PARTICIPATION

	INCREASING LEVEL OF PUBLIC IMPACT				
	INFORM	CONSULT	INVOLVE	COLLABORATE	EMPOWER
					
<b>GOAL</b>	To provide balanced and objective information in a timely manner.	To obtain feedback on analysis, issues, alternatives and decisions.	To work with the public to make sure that concerns and aspirations are considered and understood.	To partner with the public in each aspect of the decision-making.	To place final decision-making in the hands of the public.
<b>PROMISE</b>	"We will keep you informed"	"We will listen to and acknowledge your concerns."	"We will work with you to ensure your concerns and aspirations are directly reflected in the decisions made."	"We will look to you for advice and innovation and incorporate this in decisions as much as possible."	"We will implement what you decide."